

REGIONAL AWARDS

NEW BUILDING

This category is intended for any new building, regardless of type, size or budget.

NEW LIFE FOR OLD BUILDINGS

This category will include refurbishment, conservation, extensions to existing buildings; Any design work that incorporates an existing building envelope.

PLACE MAKING

This category includes external spaces, spaces between buildings and the relationship with context; Architecture is not just about 'stand alone' buildings but about streetscape and landscape.

INNOVATION

This category is not intended for completed buildings, instead it aims to reward new research, ideas, technology or methods of work that offer opportunities for developing place and communities in the highlands. This work may involve; conceptual designs that may not be realised, written explorations of architectural ideas, small scale or sculptural works, exploration of new technologies and their application in the highlands and islands.

OPEN AWARDS

In addition to the local awards there will also be two further awards that will be open to any project completed in the IAA Area.

The Best Building in the Highlands and Islands overall.

AND

The Best use of timber in a Highlands and Islands building.

DUAISEAN ROINNEIL

TOGALACH ÙR

Tha an earrann seo airson togalach ùr sam bith, gun aire do sheòrsa, meud no buidseat.

BEATHA ÙR DO SHEANN TOGLAICHEAN

Tha an earrann seo a' gabhail a-steach ath-thogail, glèidhteachas, leudachaidhean do thoglaichean a tha ann mar-thà; obair dhealbhadh sam bith a tha a' com-pàirteachadh togalach a tha ann mar-thà.

DÈANAMH ÀITEACHAN

Tha an earrann seo a' gabhail a-steach beàrnan air an taobh a-muigh, beàrnan eadar toglaichean agus an dàimh le co-theacsa; chan ann a-mhàin mu thoglaichean a tha 'a' seasamh leotha fhèin' a tha Ailtireachd, ach cuideachd mu shealladh-sràide agus shealladh-tìre.

UR-GHNÀTHACHAS

Chan ann airson toglaichean crìochnaichte a tha an earrann seo, ach rannsachaidh, smaoinneas, teicneolas agus doighean obraich ur a toirt iomhaigh ur airson leasachaidh aite agus choimhearsneachdan anns na Ghàidhealtachd 's na h-Eileanan.

DUAISEAN FOSGAILTE

An Togalach as Fheàrr sa Ghàidhealtachd agus sna h-Eileanan gu h-ìomlan AGUS

An dòigh as fheàrr san deach fiodh a chleachdadh ann an togalach sa Ghàidhealtachd no sna h-Eileanan.



Photo by Gavin Frazer

HIGHLAND CENTRAL: Meadhan Gaidhealtachd

INTRODUCTION

The Inverness Architectural Association (IAA) represents registered Architects in the Highlands and Islands of Scotland. The IAA covers a large geographical area from Shetland to Lochaber and from the Western Isles to Elgin.

The IAA Awards provide an opportunity to showcase the work undertaken by local Architects and create an opportunity for Architects, clients and members of the public to meet and exchange ideas. The event will comprise a series of local events including public exhibitions and local awards ceremonies to be held in the following areas;

- Shetland & Orkney
- Caithness, Sutherland & Easter Ross
- Skye & Lochalsh, Wester Ross & Lochaber
- Inverness, Nairn, Badenoch & Strathspey
- Moray
- Western Isles

Winners at each local awards ceremony will be put forward to the main awards ceremony to be held at the IAA conference in November.

RO-RÀDH

Tha Comann Ailtireachd Inbhir Nis (IAA) a' riochdachadh Ailtirean clàraichte ann an Gàidhealtachd agus Eileanan na h-Alba. Tha an IAA a' còmhach sgìre mhòr bho Shealtainn gu Loch Abar agus bho na h-Eileanan Siar gu Eilginn.

Bheir Duaisean IAA cothrom gus obair nan Ailtirean ionadail a thaisbeanadh agus bidh cothrom ann do na h-Ailtirean seo, an luchd-cleachdaidh agus buill a' phobaill, coinneachadh agus beachd-smuaintean a thogail bho chèile. Bidh an iomairt a' gabhail a-steach sreath de thachartasan ionadail le taisbeanaidhean poblach agus seirbheis dhuaisean ionadail air an cumail sna roinnean a leanas:

- Sealtainn & Arcaibh
- Gallaibh, Cataibh & Taobh Sear Rois
- An t-Eilean Sgitheanach & Loch Aillse / Taobh Siar Rois & Loch Abar
- Inbhir Nis, Inbhir Narann & Bàideanach & Srath Spè
- Moireibh
- Na h-Eileanan Siar

Thèid an fheadhainn a bhuannaicheas aig gach seirbheis duaise ionadail a chur air adhart chun a' phrìomh sheirbheis duaise a thèid a chumail aig co-labhairt IAA san t-Samhain.

INVERNESS ARCHITECTURAL ASSOCIATION - DESIGN AWARDS

COMANN AILTIREACHD INBHIR NIS - DUAISEAN DEALBHAI DH

PROGRAMME 2010





shortlisted: innovation
(geàrr-liosta: ur-ghnàthachas)



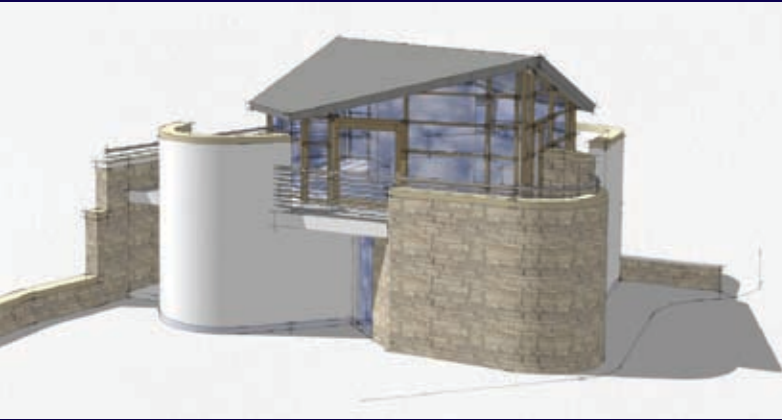
shortlisted: new buildings
(geàrr-liosta: toglaichean ùr)



shortlisted: new buildings
(geàrr-liosta: toglaichean ùr)



shortlisted: old buildings
(geàrr-liosta: sheann toglaichean)



New House, Chanory Point

The proposed house has been positioned to create a visual gateway to Chanory Point. The form of masonry ground floor walls is reminiscent of both the lighthouse and the Fort George ramparts with projecting corners that return to form deep reveals for openings. These allow occupants to obtain a wide field of vision whilst limiting the views of the inside. Placing the living accommodation at first floor level will provide occupants with the privacy they need, whilst also allowing them to take advantage of the natural light and views which are a particular feature of this site.

Taigh Ur, Rubha na Cananaich

Thèid an togalach seo a suidheachadh mar taigh geata a Rubha na Cananaich. Tha an cumadh nan ballachan aig làr nas ìsle, far a bheil oiseanan sparraidh, cruinn agus uinneagan domhainn, a cuir nar cuimhne ballachan an taigh-solais agus Caisteal Seòras faisg air làimhe. Thoir iad cothrom dhan còmhnaich an sealladh farsaing faicinn bhon taobh a staigh ach a cuir bacadh air cothroman faicinn a staigh bhon taobh a muigh. Thèid an seòmair-suidhe air an làr shuas far a bheil cothrom uinneagan mhòr a cleachdadh airson an sealladh agus an solas fa leth a mealtainn agus far a bheil barrachd prìobhaideach ri fhaotainn.

Highland Archive and Registration Centre, Inverness

A three storey repository or "strongroom", housing conservation and storage facilities for the Highland Archive, built to meet highly demanding standards of security and environmental control. A lighter, two storey section with support accommodation and spaces for making archived materials readily accessible to the public. These elements are zipped together along a generous entrance space and civic ceremony suite joined bringing daylight and ventilation into the heart of the building.

Tasglann agus Ionad-Clàraidh na Gàidhealtachd

'S e ciste mhòr làidir air trì làran a th'ann an Tasglann na Gaidhealtachd airson goireasan glèidhteachas agus stòras a cumail a rèir an riaghailtean as àirde air thaobh dìon agus smachd air an àrainneachd. 'S e togalach nas aotrom air da làr a th'ann an darna pàirt dhan togalach far a bheil goireasan taic agus ionad-clàraidh. Tha an roinn intrigeadh agus seòmraichean sìobhalta a tarraing an da pàirt ri chèile agus gabhail solas agus àile a staigh an cridhe na togalaich.

New House, Inverness

Conceived as a retirement home in the garden grounds of their large Victorian house, this project was designed around the needs of an elderly couple, their visiting siblings and their passion for their established mature garden. With a low key and 'traditional' appearance from the north entrance on to the Inverness streetscape, the Garden Town House has a contemporary private sunny Courtyard. Designed around outdoor living the courtyard has a sheltered sunny seating area on an expansive timber deck.

Taigh Ur, Inbhir Nis

'S e dachaigh ur son dithis nan sean aois a th'ann an pròiseact seo air a cruthachadh ann an garadh taigh bhictorianach aca fhèin. Chaidh an pròiseact seo air a dealbhadh airson na tha dhith orra nan sean aois, an teaghlach gan tadhal agus an ùidh mhòr a th'aca airson an garadh abaich. 'S e iomhaigh traidiseanta a th' aig an taigh bhon taobh a thuath dhan sràidean Inbhir Nis ach bhon taobh a staigh an ghàrradh prìobhaidich grianach, 's e iomhaigh ann an dòigh as ùire a th' aige, far a bheil cothroman còmhnaidh a -muigh ann an àite suidhe fasgaidh grianach air deac fiodha farsaing aig cridhe na dealbhaidh.

House Extension, Clachnaharry

This cottage was originally built in the late 19th Century as a fisherman's house on the edge of the Caledonian Canal. The design process was complicated by its Conservation Area status, however the brief was simple – transform the building into a modern living space with three bedrooms, whilst maximizing the views and sunsets to the south west. The seafront informed the design with all living space orientated to the view in an open plan low extension allowing the upstairs rooms to look out over the roof to the view.

Taigh air leudachadh, Clachan na h-Aire

Bho thùs, 's e taigh iasgair a 19mh linn aig oir Amar-Uisge a' Ghlinne Mhòir a bh'ann. Bha an obair dealbhaidh nas doirbhe air sgàth s gu bheil e air a suidheachadh ann an sgìre-ghleidhteachas, ge boil leis a seo, 's e plana simplidh a bh'aca son a togail àite còmhnaidh ur, trì seòmraichean leabaidh agus seallaidhean a bharrach. Thàinig buaidh air an dealbhaidh bhon cladhach, far a bheil an àiteachan còmhnaidh a choimhead a mach dhan sealladh agus a h-uile a càil a cuir ri chèile ann an dòigh fosgailte agus ann an leudachadh iosal a thoirt cothrom dhan seòmraichean shuas an sealladh faicinn thairis air am mullach.



shortlisted: new buildings
(geàrr-liosta: toglaichean ùr)



shortlisted: old buildings
(geàrr-liosta: sheann toglaichean)



shortlisted: old buildings
(geàrr-liosta: sheann toglaichean)



shortlisted: place making
(geàrr-liosta: dèanamh àiteachan)



St Columbas Church, Culloden

The requirement for a low maintenance chapel building capable of extension to accommodate an ever expanding population. The design simplifies the relationship between ancillary spaces and the main chapel by splitting the two forms of the building, giving clear definition both internally and externally to which spaces are more important.

Eaglais Neamh Cholm Cille.

Bha feum air eaglais ur a thogail far am biodh comas ga leudachadh son an àireamhan sluagh a tha fàs nas motha a staigh beagan bliadhnaich. Tha an dealbhaidh a cumail an ceangalan eadar an seòmraichean thaic agus an eaglais fhèin ann an dòigh simplidh mar a tha iad air a cumail ann an da cumadh fa leth airson a soillearachadh bhon taobh a muigh agus taobh a staigh de na tha an àiteachan as cudthromaiche.

Residential Home, Inverness

Current hygiene and safety regulations required alterations to an existing residential home to provide an enlarged kitchen and new laundry facilities. A new glazed corridor along the external elevation of the existing building provides independent access to the kitchen and laundry areas. The glazed corridor is designed to contrast with the existing art deco styling of the kitchen wing. It is intended that it will be highly transparent to enable the existing architecture to be retained as a visible presence through the new structure.

Dachaigh Còmhnaidheil, Inbhir Nis

Bha feum ann airson atharrachaidhean gu dachaigh chomhnaidheil a dèanamh airson cidsin nas motha agus goireasan nighe agus a chumail leis an riaghailtean slàinte agus sàbhailte. Chaidh trannsa ur a togail ri thaobh an balla na sean togalaich son a toirt intrigidh neo-eisimeilich dhan cidsin agus goireasan nighe. S ann ann an dòigh ur a bha an trannsa glinne air a dealbhadh airson a bith eadar dhealaichte bhon seann togalach aig a bheil stoidhle Art Deco. Bha dùil ann gum bith an stoidhle na sean togalach ri faicinn soilleir tron structar ur.

New House, Strath Glas

A traditional 1½ storey cottage and a separate 1½ storey annexe were linked, with the living accommodation from the cottage relocated. The solution gives each main space of living room, dining room and breakfast kitchen/utility its own distinct character externally but makes them open plan internally. Each volume can be understood as a separate entity yet flows into the adjacent one. Variations of floor level emphasise the differences but similarity of details and finishes unifies them.

Taigh Ur, Srath Ghlais

Chaidh taigh agus bathar traidiseanta ceangailte ri chèile a cleachdadh seòmraichean còmhnaidh ann an dòigh ur. Tha an fosglan a toirt dearbh aithne fa leth gu gach pàirt, seòmair suidhe, seòmair bidhe agus cidsin ach gan cumail ri chèile ann an plana fosgailte bhon taobh a staigh. Tha iad air a cumail mar cumaidhean neo-eisimeilich, ach aig an aon am, tha gach àite nan sruth ri chèile. Tha an airde na gach làr ag atharrachadh agus a chumail iad neo eisimeileach ach aig an aon am tha an mion dealbhaidh agus stoidhle coiteachan gan cumail ri chèile.

Miller Yard, Cromarty

The existing garden was a confined space with an awkward change in level. Creating two terraces and the sweeping path allowed the visitor to rise gradually to the upper level in a comfortable and interesting manner. The design creates an outdoor extension to the museum that could be used as a forum for learning about Miller. Fundamental to the design was the use of a wide range of stone to reflect Hugh Millers dedication to the pursuit of knowledge through his study of fossils. All the stone used in the project is appropriate to Hugh Millers works.

Garadh Muillear, Cromba

'Se àite teann aig a bheil leathad cearbach a bh'ann an garadh bho thùs. Chaidh da uchdan ur agus frith-rathad siabadh a togail airson a toirt cothrom dhan luchd tadhal a dh'èirich dhan uchdan nas àirde ann an dòigh comhfhurtail agus inntinneach. Chuir an dhealbhadh an da cuid, garadh agus taigh tasgaidh ri chèile airson àite a muigh a thogail agus a toirt cothrom do dhaoine a chruinneach agus foghlam fhaighinn mun obair Uisdean Muillear. Aig bonn an dealbhaidh, bha clachan na gach seòrsa air a roghnaich a reir an obair rannsachaidh Uisdean Muillear agus an sgrudaidh a rinn e air fosaillean.